

Technical Specifications

Compagnie Marizibill

Anatole's Little Saucepan

Updated February 25, 2016
(Cancels and replaces all previous versions)

Table of Contents

General Information ...	page 3
Stage ...	page 4
Lighting ...	page 5
Sound ...	page 6
Video and control boards ...	page 7
Staff ...	page 8
Miscellaneous ...	page 9
Lighting charts ...	page 10

GENERAL INFORMATION

Anatole's Little Saucepan is a show for table puppets performed on a tabletop puppet theater in three parts. It's not technically very complicated; however, the set up requires time, rigor and precision. Absolutely no outside light must filter onto the stage. The ceiling and fly space, as well as the freestanding mounted lights, must be invisible to the audience (necessitating black curtains: masking borders, legs, etc.).

This spec sheet may be modified to fit the particular capacities and restrictions of your performance space.

However, all adaptations and modifications must be subject to prior approval by the tour manager.

Each venue will pre-set a number of elements (lights, sound and stage). The times listed for assembly, light rigging and cues are after pre-set.

If it is not possible for your venue to set up before our arrival, please inform the tour manager so that we can find other solutions.

TIMING

Unloading, set assembly and lighting cues: 6 hours

Adjustments and run through: 2 hours

Stage pre-preparation: 35 min

Stage and show prep: 1 ½ hours (the morning of the show)

Show length: 37 minutes

Preparation between two consecutive shows: 50 min

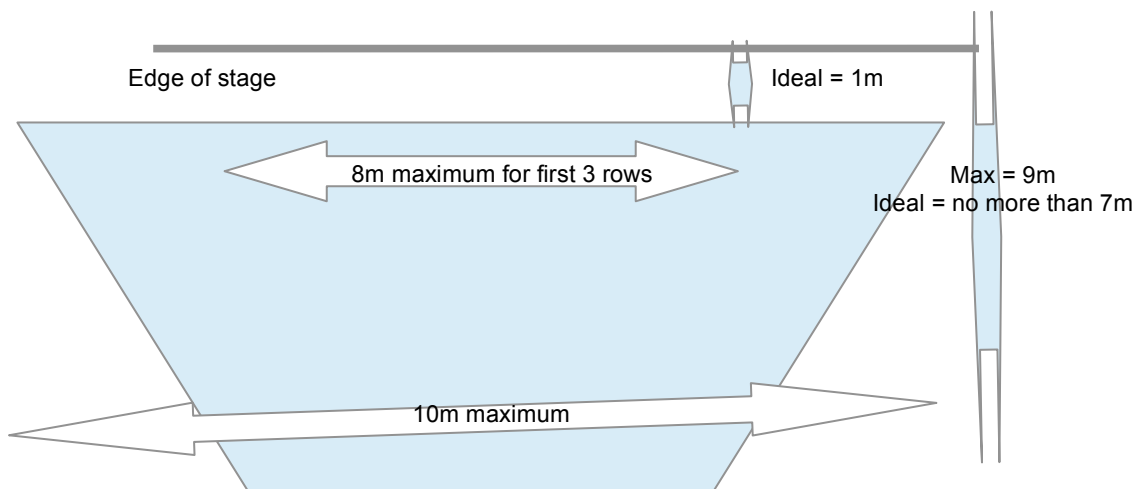
Set strike, clean up and loading: 2 hours

AUDIENCE

House: 150 people (including children)

Layout:

- Ideally = stage on floor level with audience on risers
- 1st row 1 meter from the edge of the stage
- First 3 rows maximum opening of 8m with a trapezoid shape towards the higher rows up to an opening of no more than 10m (see below)



STAGE

Pre-installation by the venue is required (Legs and borders)

Ideal dimensions wall to wall

10m x 8m x 5m (below fly bars)

(Minimum = 8m x 6m x 4m)

- Black box stage required (floor, walls and ceiling)
- Possibility to hang lights and set elements above the stage (fly bars, light grid):
 - 1 bar for legs, framing the stage with a 6m opening + black borders, framing the stage at a height of 4m and 1.25m from the edge of the stage.
 - 1 lighting bar, 2m from the edge of the stage
 - 1 bar for legs at 2.30m from the edge of the stage, framing the stage at 6m opening (optional, depending on the opening from wall to wall)
 - 1 bar for machinery at 2.70m from the edge of the stage
- 1 light stand for a projector with double hook attachment to knot the rigging to and make it accessible to the puppeteers
- Borders (black): height to be determined depending on stage dimensions
- Legs (vertically opening curtains - black), plus 3 curtains hung in an Italian masking style (see chart), with no sightlines or light leakage
- Black stage floor, smooth and level
- TOTAL BLACKOUT REQUIRED ONSTAGE and in the house

The set consists of:

- 1 tabletop puppet theater in three parts, 3.5m long and 60 cm wide
- 1 rigging system with 3 separate reflectors, adjusted during the show
- 3 metal trunks

LIGHTS

Pre-installation by the venue is required

Consoles and power blocks

- 24 channels for 2kw dimmers: 4 channels front of the house (includes 2 for the audience), 9 channels on the grid, 12 channels on the stage floor, divided into 14 lines (7 stage right and 7 stage left)
- Make sure to have a DMX onstage when setting the cues
- **Company has its own light board** (computer + software)

Please note: all blocks should be set on the same curve: linear frequency curve (ex: « lin » in Robert Juliat, « TV2 » in ADB...)

Spots

- 5 short zoom profile projectors 70W type Mole-Richardson
- 5 profile projectors 1kw type 614 SX, 3 with gobo holders
- 9 profile projectors 1kw type 613 SX
- 8 profile projectors ETC Source Four Junior Zoom
- House lighting on a dimmer that can be controlled from the light board

Hardware

- 4 rigging ladders, boom style or A-frame ladder (max height of center of lens = 2.20m) – see chart
- Leaning ladder (max height of center of lens = 90cm) – see chart

Consumables

- Black matte aluminum duct tape required (no standard silver aluminum duct tape)
- Black foil
- Black duct tape and black Barnier adhesive
- White duct tape
- Glow-in-the-dark tape
- Gels (Lee Filters): 203

4 size 613 SX

4 size ETC Source Four

2 size short zoom profiles

Please note: - The rigging of the lights must be precise and exacting, which requires clean projectors in good condition. If the venue can dust the lenses beforehand it will save us time and add to the show's precision.
- The company will bring its own computer that will act as the light console for the show. However, to set up the lights, we will use your light board, which will have been pre-set to our specifications.

SOUND

Pre-installation by the venue is required (cabling, installation and testing of the front of the house and monitors)

- 1 sound board adapted to the house
- 2 J/C stereo monitors onstage (used as FOH at a distance)
- 2 stereo speakers in the house behind the audience
- 1 mini-jack cable to connect the computer to the sound console
- 1 spare CD player with auto pause function

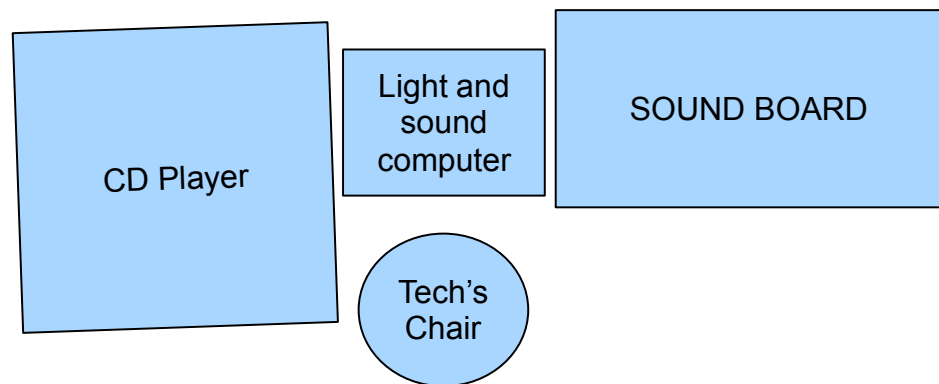
Notes:

- ⤴ The computer and CD player channels should be set to post-fader
- ⤴ The onstage monitors will be on 2 consecutive channels following those used by the CD player, or in two groups
- ⤴ The in house speakers will be on 2 consecutive channels following those used by the onstage monitors, or in two groups

CONTROLS

The light and sound consoles should be set near enough to each other that they can be operated by the same person (see chart below).

If the consoles are more than 10m from the edge of the stage or in a closed room, please provide equipment to monitor the sound onstage from the controls. Volume level should be able to be controlled by the light/sound operator.



STAFF (with pre-set)

If no pre-set is available in your venue, please contact the stage manager in order to adapt the schedule and personnel necessary.

Unloading, set and machinery assembly, lighting set-up (floor), and sound check (4 hours)

- 1 general technical manager (stage and machinery)
- 1 sound manager
- 1 lighting manager
- 1 electrician

Lights (2 hours)

- 1 sound manager
- 1 lighting manager
- 1 electrician

Sound adjustments and sound checks (2h)

- 1 sound manager
- 1 lighting manager

Show (35 min)

- 1 general tech manager (babysitting)

Strike and loading (2 hours)

- 1 general tech manager (stage)
- 1 lighting manager
- 1 electrician

*Note: when the stage is on the same level as the first row, it helps to have **one or two people in the house** at show time in order to make sure that children and adults do not come onstage before, during or after the show.*

MISCELLANEOUS

- Please provide a step ladder with 5 steps for the adjustment of the floor spots
- Please provide access to the grid (ladder, aerial work platform...)
- Please provide 3 dark, thick covers about 2m x 2m to put over the parts of the set the puppets will be on during the show (moving blankets, old stage curtains...)
- Please provide healthy snacks in the dressing rooms for the set-up and show days: water, tea, coffee, fresh and dried fruits, biscuits

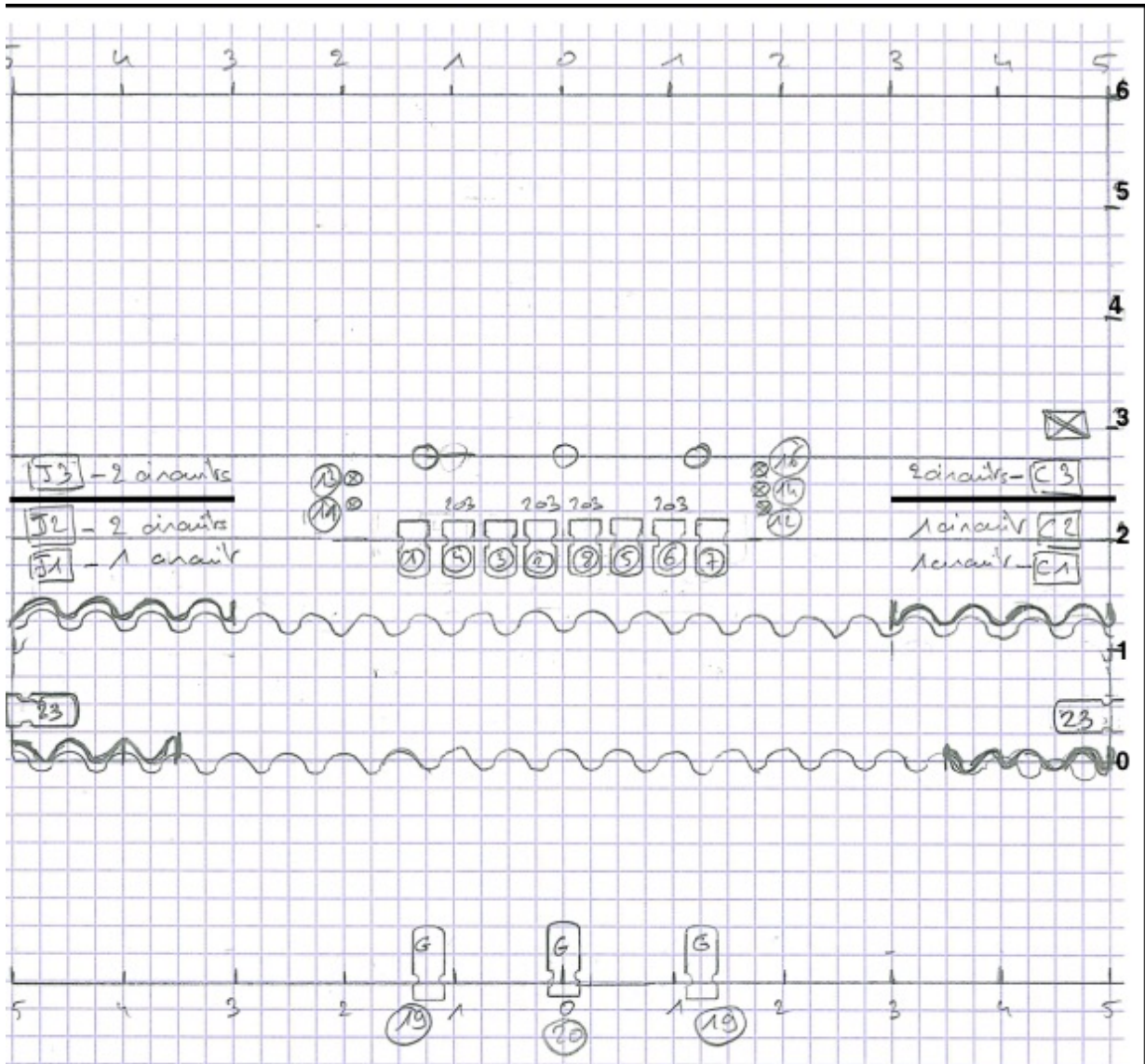
IMPORTANT information for the custodial and cleaning crews

Picking up and cleaning the stage

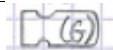
- ⤴ The stage should be cleaned before the set goes up
- ⤴ **Please do not clean the stage once the set is in place:** the puppets are fragile and dirty easily, some of them are kept on the ground
- ⤴ If necessary, use a dry broom and only while the troupe is present **(do not use water or a damp mop)**
- ⤴ Between shows, please clean only the house (audience seats)

Feel free to contact us and send us the technical specifications of your space as well as the lighting plan so that we can decide together what technical adaptations will be necessary in order to guarantee the quality of the show.

Lighting Plan



Legend



Profile projector 1kw 614 SX (with gobo holders X3) X 5



Profile projector 575 Source Four Junior Zoom X 8



1 circuit = light stand + number of circuits



Circuit for short zoom profile projector for puppet theater Mole-Richardson X 5

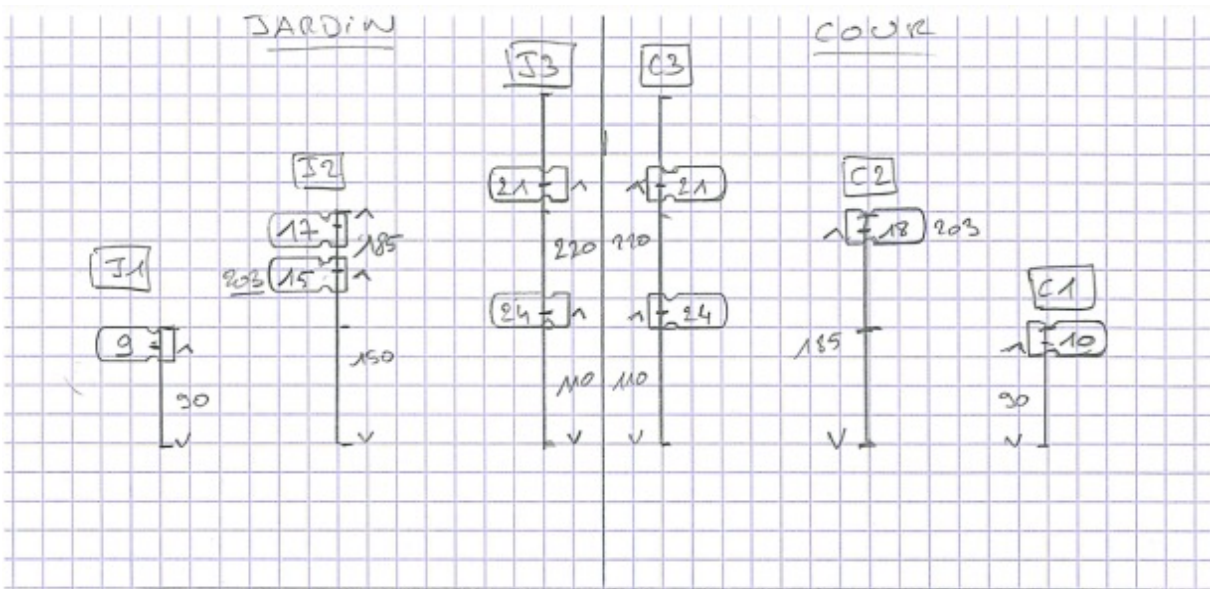


machinery (pulleys + ropes, provided by the company)



light stand for projector with double hook attachment, to be supplied by the venue

Standing light floor plan



JARDIN = stage right

COUR = stage left



Profile projector 1kw type 613 SX X 9 (mounted)